



patco
Arrow of Safety

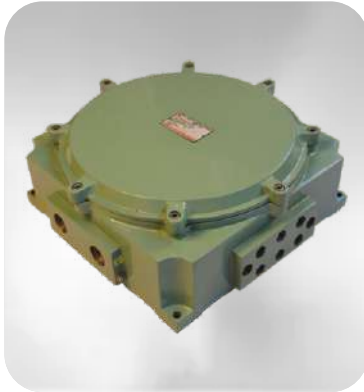


www.patcoflameproof.com
 www.patcoflameproof.in

Manufacturer of:
 Flameproof / Weatherproof

- ❖ Electrical Equipment
- ❖ Lighting Fittings
- ❖ LED Lighting Fittings
- ❖ Instruments Enclosure
- ❖ Junction Box
- ❖ Cable Glands

Tested Certified by CIMFR, Dhanbad



Flameproof Testing with Latest
 IS / IEC 60079-1 : 2007
 IS / IEC 60529-1 : 2001 (IP-66)



PATCO FLAME  PROOF PRODUCTS

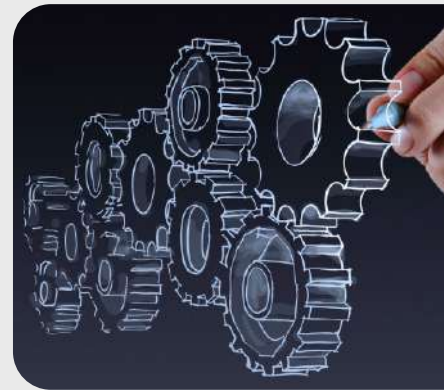
About Us

Incepted in the year 2007, we are an established name engaged in Manufacturing of Flameproof Light Fittings, Flameproof Control Station & Switchgear, Flameproof Junction Boxes & Control Panel, Instruments Enclosure, Flameproof Thermocouple Head, Lighting and Switchgear for Clean Room Application, FLP & WP Cable Gland & Miscellaneous Products. The range receives high accolade for its features such as dust resistance, corrosion resistance, durability and low maintenance.



Research & Development

We possess state-of-the art research and development unit assisting in development of latest instrument enclosure, instrument box and others. The unit is equipped with sophisticated equipment and tools. We have employed a team of personnel that conducts intensive research activity on various factors including raw material, technology and production process. They do market survey to collect data related to latest development and analyze it on the basis of present array and available resource with our company. Only after complete assurance, they convey it to the concerned department.



Client Satisfaction

Our prime focus is to offer best quality flameproof / weatherproof instruments enclosure and electrical equipments to our clients. The range is fabricated under the supervision of quality team in compliance with quality standard of IS: 13346 / 2004 (IEC 60079-0/2000) and others.

The assortment is available in various specifications as per the client specifications and requirements. Thus, we put our maximum efforts to satisfy utmost to our clients' requirements. The range is widely appreciated by our customers and is repeatedly ordered by them.



Quality Assurance

The finished electrical equipments and instrument enclosures are developed in compliance for gas groups I, IIA & IIB1S : 2148 / 2004 (IEC 60079-1/2001). IP-66 15 : 12063-1987 IEC 601049- 1989. Our products are also certified by (CIMFR) Central Institute Of Mining And Fuel Research Barwa Road Dhanbad. The range is undergone through various testing in respect of design, performance, rating and T-class on various parameters as per quality standards.



Why Choose Us?

- ✓ Offer best quality product in all disciplines.
- ✓ Believes in delivering up to date technological equipments.
- ✓ Our ranges of products are known for its durability & long life services.
- ✓ Supplying & exporting the factory end products to our customers.
- ✓ Customization facilities are available for our esteemed clients.

Our Vision

Provide Decent Quality Products to All The Customers, Deliver Out-standing Services To All Industrial Communities. Innovation, Quality, Reliability and Service.



Research & Development



Manufacturing



Distribution

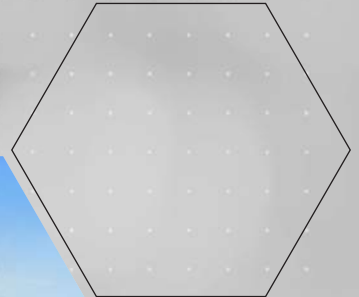
Our Core Values

- Customer Delight
- Constantly invest in R & D, Training and Infrastructure
- Highest levels of Corporate Governance

Industries We Serve



Petrochemical



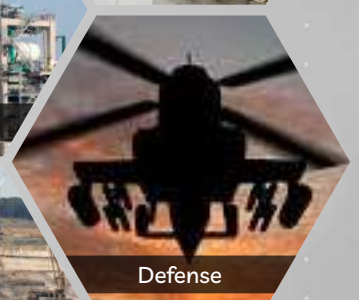
Chemical



Pharmaceuticals



Mining



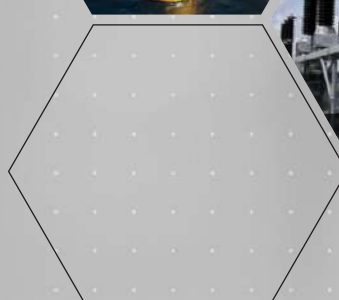
Defense



Oil & Gas



Power Plant



FLP / WP Control Station & Switch Gear



FLP / WP Direct Entry - Push Button Station

- * Catalogue No.: PFP/DOL/08
- * Ex-Protection: AS PER IS / IEC-60079-1:2007
- * Gas Group: I, IIA, IIB
- * IP Protection: IP-65 IS / IEC60529-2001
- * Hardware: Stainless Steel
- * Cable Entry: 02 OR 04 Nos. for M20 (3/4" ET)
- * Green Push Button START: With 1 NO Contact element for 10 AMP
- * Red Push Button STOP: Mushroom Head Pad Lock with 1 NC Contact 10 AMP



FLP / WP Direct Entry - Rotary Switch

- * Catalogue No.: PFP/RJ/10
- * Ex-Protection: AS PER IS / IEC-60079-1:2007
- * Gas Group: I, IIA, IIB
- * IP Protection: IP-65 IS / IEC60529-2001
- * Hardware: Stainless Steel
- * Cable Entry: 02 OR 04 Nos. for M20 (3/4" ET)
- * Green Push Button START: With 1 NO Contact element for 10 AMP
- * Red Push Button STOP: Mushroom Head Pad Lock with 1 NC Contact 10 AMP



FLP / WP DOL Starter Upto 10HP

- * Catalogue No.: PFP/DOL/08
- * Ex-Protection: AS PER IS / IEC-60079-1:2007
- * Gas Group: I, IIA, IIB
- * IP Protection: IP-65 IS / IEC60529-2001
- * Hardware: Stainless Steel
- * Rating: Upto 10 H.P. 220V / 415 Volts AC 50 / 60Hz.
- * Green Push Button START: With 1 NO Contact element for 10 AMP
- * Red Push Button STOP: Mushroom Head Pad Lock with 1 NC Contact 10AMP



FLP / WP Hooter

- * Catalogue No.: PFP/EH/08
- * Ex-Protection: AS PER IS / IEC-60079-1:2007
- * Gas Group: I, IIA, IIB
- * IP Protection: IP-65 IS / IEC60529-2001
- * Hardware: Stainless Steel
- * Auxiliary Supply: 230V AC OR 24V DC As Per Requirements
- * Power Consumption: 450 mA @ 24VDC & 80 mA @ 230VAC
- * Audio Range: 80 db (Pulsating)



FLP / WP Limit Switch

- * Catalogue No.: PFP/LS/07
- * Ex-Protection: EEx-d Type, IS / IEC60079-1:2007
- * Gas Group: IIA, IIB T6 IS / IEC60079-0:2004
- * IP Protection: IP-66 IS / IEC60529-1:2001
- * Hardware: Stainless Steel
- * Material of Contraction: Die Cast Aluminum Alloy LM6
- * Switch: 1 NO + 1 NC ELEMENT
- * Paint: Epoxy Polyester Powder Coating
- * Earthing: Internal - 01 No.
- * Cable Entry: 02 Nos. for M20 (3/4" ET)



FLP / WP Limit Switch with Adjustable Long Liver

- * Catalogue No.: PFP/LS/07
- * Ex-Protection: EEx-d Type, IS / IEC60079-1:2007
- * Gas Group: IIA, IIB T6 IS / IEC60079-0:2004
- * IP Protection: IP-66 IS / IEC60529-1:2001
- * Hardware: Stainless Steel
- * Material of Contraction: Die Cast Aluminum Alloy LM6
- * Switch: 1 NO + 1 NC ELEMENT
- * Paint: Epoxy Polyester Powder Coating
- * Earthing: Internal - 01 No.
- * Cable Entry: 02 Nos. for M20 (3/4" ET)



FLP / WP Manual Call Point

- * Catalogue No.: PFP/FA/09
- * Ex-Protection: AS PER IS / IEC-60079-1:2007
- * Gas Group: I, IIA, IIB
- * IP Protection: IP-65 IS / IEC60529-2001
- * Hardware: Stainless Steel
- * Rating: 10A 415V, AC/1A, 250V DC 50Hz
- * Contact Element: 10A 415V AC / 1A 250V DC
- * Actuator: Spring Loaded 1 No.
- * Glass: Breakable Glass 1 No.
- * Cable Entry: 02 Nos. for M20 (3/4" ET)

FLP / WP Control Station & Switch Gear

FLP / WP Rotary Switch

- * Catalogue No.: PFP/RS/09
- * Ex-Protection: AS PER IS 2148-2004 / IEC-60079-1:2007
- * Gas Group: I, IIA, IIB
- * IP Protection: IP-65 IS / IEC60529-2001
- * Hardware: Stainless Steel
- * Material of Contraction: High Pressure Die Cast Aluminum Alloy LM6
- * Switch: Upto 32 A SP / DP / TP
- * Earthing: Internal - 01 No. & External - 2 Nos.
- * Cable Entry: 02 Nos. for M20 (3/4" ET)



FLP / WP Only Start Push Button Station

- * Catalogue No.: PFP/PBS/09
- * Ex-Protection: AS PER IS 2148-2004 / IEC-60079-1:2007
- * Gas Group: I, IIA, IIB
- * IP Protection: IP-65 IS / IEC60529-2001
- * Hardware: Stainless Steel
- * Green Push Button: START with 1 NO Contact element for 10 AMP
- * Earthing: Internal - 01 No. & External - 2 Nos.
- * Cable Entry: 02 Nos. for M20 (3/4" ET)
- * Paint: Epoxy Polyester Powder Coating



FLP / WP Only Stop Push Button Station

- * Catalogue No.: PFP/PBS/09
- * Ex-Protection: AS PER IS 2148-2004 / IEC-60079-1:2007
- * Gas Group: I, IIA, IIB
- * IP Protection: IP-65 IS / IEC60529-2001
- * Hardware: Stainless Steel
- * Red Push Button: STOP Mushroom Head Pad Lock with 1 NC Contact 10AMP
- * Earthing: Internal - 01 No. & External - 2 Nos.
- * Cable Entry: 02 Nos. for M20 (3/4" ET)
- * Paint: Epoxy Polyester Powder Coating



FLP / WP Push Button Station with Indicator

- * Catalogue No.: PFP/PBS/09
- * Ex-Protection: AS PER IS 2148-2004 / IEC-60079-1:2007
- * Gas Group: I, IIA, IIB
- * IP Protection: IP-65 IS / IEC60529-2001
- * Hardware: Stainless Steel
- * Indicating Lamp: 1 No. Led 230V
- * Green Push Button: START with 1 NO Contact element for 10 AMP
- * Red Push Button: STOP Mushroom Head Pad Lock with 1 NC Contact 10AMP



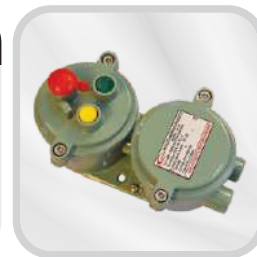
FLP / WP Push Button Station

- * Catalogue No.: PFP/PBS/09
- * Ex-Protection: AS PER IS / IEC-60079-1:2007
- * Gas Group: I, IIA, IIB
- * IP Protection: IP-65 IS / IEC60529-2001
- * Hardware: Stainless Steel
- * Green Push Button: START with 1 NO Contact element for 10 AMP
- * Red Push Button: STOP Mushroom Head Pad Lock with 1 NC Contact 10AMP
- * Cable Entry: 02 Nos. for M20 (3/4" ET)



FLP / WP Reverse - Forward Push Button Station

- * Catalogue No.: PFP/RS/09
- * Ex-Protection: AS PER IS 2148-2004 / IEC-60079-1:2007
- * Gas Group: I, IIA, IIB
- * Yellow Push Button: REVERSE with 1 NO Contact Element 10 AMP
- * Green Push Button: FORWARD with 1 NO Contact Element 10 AMP
- * Red Push Button: STOP Mushroom Head Pad Lock with 1 NC Contact 10AMP
- * IP Protection: IP-65 IS / IEC60529-2001



FLP / WP Switch Socket with Plug

- * Catalogue No.: PFP/SS/09
- * Ex-Protection: AS PER IS 2148-2004 / IEC-60079-1:2007
- * Gas Group: I, IIA, IIB
- * IP Protection: IP-65 IS / IEC60529-2001
- * Hardware: Stainless Steel
- * Switch: Upto 32 A SP / DP / TP
- * Socket: 3 PIN / 4 PIN / 5 PIN
- * Plug: 3 PIN / 4 PIN / 5 PIN
- * Terminals: Clip on Type Rail Mounted & Strip Type
- * Cable Entry: 02 Nos. for M20 (3/4" ET)



FLP/ WP Lighting Fitting



FLP / WP Bulk Head Fitting

- * Catalogue No.: PFP/BL/02
- * Ex-Protection: AS PER IS / IEC-60079-1:2007
- * Gas Group: I, IIA, IIB
- * IP Protection: IP-65 IS / IEC60529-2001
- * Hardware: Stainless Steel
- * Rating: 160W MLL, 2 X 23W CFL ,30W, 45W, 60W LED
- * Lamp Holder: Enclosed Break Porcelain E-27
- * Glass: Type "A" Toughened AS PER IS:2206 /84 (Part-I)
- * Earthling: Internal - 01 No. & External - 2 Nos.
- * Cable Entry: 02 Nos. for M20 (3/4" ET)



FLP / WP Integral Well Glass Fitting

- * Catalogue No.: PFP/WG/05
- * Ex-Protection: AS PER IS / IEC-60079-1:2007
- * Gas Group: I, IIA, IIB
- * IP Protection: IP-65 IS / IEC60529-2001
- * Hardware: Stainless Steel
- * Rating: 80W HPMV, 125W HPMV, 70 MHL 60W , 75W LED
- * Wire Guard: M.S. White Powder Coated
- * Lamp Holder: Enclosed Break Porcelain E-27
- * Glass: TYPE "A" Toughened AS PER IS:2206 / 84 (PART-I)



FLP / WP Well Glass Fitting

- * Catalogue No.: PFP/WG/06
- * Ex-Protection: AS PER IS 2148-2004/IEC-60079-1:2007
- * Gas Group: I, IIA, IIB
- * IP Protection: IP-65 IS / IEC60529-2001
- * Hardware: Stainless Steel
- * Rating: 160 MLL, 2 X 23W CFL, 36W CFL 30W , 45W, 60W LED
- * Wire Guard: M.S., White Powder Coated
- * Lamp Holder: Enclosed Break Porcelain E-27
- * Glass: TYPE "A" Toughened AS PER IS:2206 / 84 (PART-I)



FLP / WP Tube-Light Fitting

- * Catalogue No.: PFP/FTL/03
- * Ex-Protection: AS PER IS 2148-2004 / IEC-60079-1:2007
- * Gas Group: I, IIA, IIB
- * IP Protection: IP-65 IS / IEC60529-2001
- * Hardware: Stainless Steel
- * Rating: 1 X 36W 4 FT, 2 X 36W 4 FT, 1 X 18W LED 4 FT, 2 X 18W LED 4 FT 1X 18W 2FT , 2 X 18W 2 FT , 1 X 9W LED 2FT, 2 X 9W LED
- * Wire Guard: M.S., White Powder Coated
- * Glass: TYPE "A" Toughened AS PER IS:2206 / 84 (PART-I)



FLP / WP Emergency Tube-Light Fitting

- * Catalogue No.: PFP/FTL/03
- * Ex-Protection: AS PER IS / IEC-60079-1:2007
- * Gas Group: I, IIA, IIB
- * IP Protection: IP-65 IS / IEC60529-2001
- * Hardware: Stainless Steel
- * Auxiliary Supply: 230V AC OR 24V DC As Per Req.
- * Power Consumption: 450 mA @ 24VDC & 80 mA @ 230VAC
- * Audio Range: 80 db (Pulsating)
- * Flasher: Led Type (Optional As Per Client Requirements)



FLP / WP Hand Lamp

- * Catalogue No.: PFP/HL/01
- * Ex-Protection: AS PER IS / IEC-60079-1:2007
- * Gas Group: I, IIA, IIB
- * IP Protection: IP-65 IS / IEC60529-2001
- * Hardware: Stainless Steel
- * Wire Guard: M.S. White Powder Coates
- * Rating: 100W GLS, 60W GLS, 18W CFL, 9W-12W LED
- * Lamp Holder: Enclosed Break Porcelain E-27
- * Glass: TYPE "A" Toughened AS PER IS:2206 / 84 (PART-I)
- * Cable Entry: 02 Nos. for M20 (3/4" ET)



FLP / WP Reaction Vessel Lamp

- * Catalogue No.: PFP/RV/01
- * Ex-Protection: AS PER IS 2148-2004 / IEC-60079-1:2007
- * Gas Group: I, IIA, IIB
- * IP Protection: IP-65 IS / IEC60529-2001
- * Hardware: Stainless Steel
- * Switch: 12A DP, ON-OFF Switch 250V A.C. 50Hz, 12V AC Timer, Sec. Timing As Per Client Req.
- * Rating: 100W GLS, 15W CFL, 9W-12W LED
- * Lamp Holder: Enclosed Break Porcelain E-27
- * Glass: TYPE "A" Toughened AS PER IS:2206 / 84 (PART-I)

FLP/WP Lighting Fitting

FLP / WP Level Gauge Illuminator

- * Catalogue No.: PFP/LGI
- * Ex-Protection: Ex-d, AS PER IS 2148-2004 / IEC-60079-1:2007
- * Gas Group: I, IIA, IIB
- * IP Protection: IP-65 IS / IEC60529-2001
- * Rating: 15W, 250V, AC - T6
25W, 250V, AC - T6
- * Wire Guard: M.S. White Powder Coated
- * Lamp Holder: Enclosed Break Porcelain E-27
- * Glass: TYPE "A" Toughened AS PER IS:2206 / 84 (PART-I)



Explosionproof & Intrinsically Safe Torch

- * Certificate No.: PFP/PBS/09
- * Approved By: PESO Under Petroleum Rules Nagpur. LSA Code Items Approved By IRS, Mumbai. Explosionproof & Intrinsically Safe Item Certified By Karandikar Lab.
- * Type: EX IA
- * Suitable For: ZONE 0, 1 & 2.
- * Gas Group: IIA, IIB & IIC.
- * Temperature Classification: T4-30* C < TA < + 40C*
- * Ingress Protection: IP64 AS PER IS / IEC 60529:2001



FLP/WP Junction Boxes & Control Panel

FLP / WP 4 Way Junction Box - 74 mm Dia

- * Catalogue No.: PFP/JB/05
- * Ex-Protection: AS PER IS 2148-2004 / IEC-60079-1:2007
- * Gas Group: I, IIA, IIB
- * IP Protection: IP-65 IS / IEC60529-2001
- * Hardware: Stainless Steel
- * Material of Contraction: Die Cast Aluminum Alloy LM6
- * Terminal: 16A 4 Way Clip on Type Rail Mounted
- * Paint: Epoxy Polyester Powder Coating
- * Earthing: Internal - 01 No. & External - 2 Nos.
- * Cable Entry: 02 OR 04 Nos. for M20 (3/4" ET)



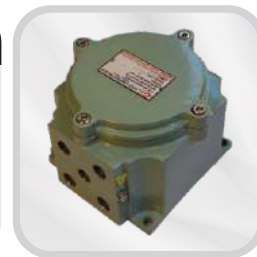
FLP / WP 2 Way - 4 Way Junction Box - 100 mm Dia

- * Catalogue No.: PFP/JB/10
- * Ex-Protection: AS PER IS / IEC-60079-1:2007
- * Gas Group: I, IIA, IIB
- * IP Protection: IP-65 IS / IEC60529-2001
- * Hardware: Stainless Steel
- * Material of Contraction: High Pressure Die Cast Aluminum Alloy LM6
- * Terminal: 32A 4 Way Clip on Type Rail Mounted
- * Earthing: Internal - 01 No. & External - 2 Nos.
- * Cable Entry: 02 OR 04 Nos. for M20 (3/4" ET)



FLP / WP Junction Box - 150 mm Dia

- * Catalogue No.: PFP/JB/150
- * Ex-Protection: AS PER IS / IEC-60079-1:2007
- * Gas Group: I, IIA, IIB
- * IP Protection: IP-65 IS / IEC60529-2001
- * Hardware: Stainless Steel
- * Material of Contraction: High Pressure Die Cast Aluminum Alloy LM6
- * Terminal: As Per Client Requirements
- * Earthing: Internal - 01 No. & External - 2 Nos.
- * Cable Entry: As Per Client Requirements



FLP / WP Junction Box - 220 mm Dia

- * Catalogue No.: PFP/JB/220
- * Ex-Protection: AS PER IS / IEC-60079-1:2007
- * Gas Group: I, IIA, IIB
- * IP Protection: IP-65 IS / IEC60529-2001
- * Hardware: Stainless Steel
- * Material of Contraction: High Pressure Die Cast Aluminum Alloy LM6
- * Terminal: As Per Client Requirements
- * Earthing: Internal - 01 No. & External - 2 Nos.
- * Cable Entry: As Per Client Requirements

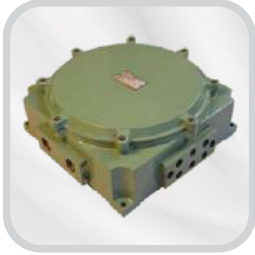


FLP/WP Junction Boxes & Control Panel



FLP / WP Junction Box - 250 mm Dia

- * Catalogue No.: PFP/JB/250
- * Ex-Protection: AS PER IS 2148-2004 / IEC-60079-1:2007
- * Gas Group: I, IIA, IIB
- * IP Protection: IP-65 IS / IEC60529-2001
- * Hardware: Stainless Steel
- * Material of Contraction: Die Cast Aluminum Alloy Lm6
- * Terminal: As Per Client Requirements
- * Paint: Epoxy Polyester Powder Coating
- * Earthing: Internal - 01 No. & External - 2 Nos.
- * Cable Entry: As Per Client Requirements



FLP / WP Junction Box - 350 mm Dia

- * Catalogue No.: PFP/JB/350
- * Ex-Protection: AS PER IS 2148-2004 / IEC-60079-1:2007
- * Gas Group: I, IIA, IIB
- * IP Protection: IP-65 IS / IEC60529-2001
- * Hardware: Stainless Steel
- * Material of Contraction: Die Cast Aluminum Alloy Lm6
- * Terminal: As Per Client Requirements
- * Paint: Epoxy Polyester Powder Coating
- * Earthing: Internal - 01 No. & External - 2 Nos.
- * Cable Entry: As Per Client Requirements

FLP/WP Instruments Enclosure



FLP / WP Direct Entry - Instrument Enclosure

- * Catalogue No.: PFP/CS/10
- * Ex-Protection: AS PER IS / IEC-60079-1:2007
- * Gas Group: I, IIA, IIB
- * IP Protection: IP-65 IS / IEC60529-2001
- * Hardware: Stainless Steel
- * Material of Contraction: Die Cast Aluminum Alloy Lm6
- * Glass Window: 1 No. 74 mm Diameter Glass Window
- * Paint: Epoxy Polyester Powder Coating
- * Earthing: Internal - 01 No. & External - 2 Nos.
- * Cable Entry: 02 OR 04 Nos. for M20 (3/4" ET)



FLP / WP Instrument Enclosure for Temperature Indicator

- * Catalogue No.: PFP/DI/09
- * Ex-Protection: AS PER IS / IEC-60079-1:2007
- * Gas Group: I, IIA, IIB
- * IP Protection: IP-65 IS / IEC60529-2001
- * Hardware: Stainless Steel
- * Material of Contraction: High Pressure Die Cast Aluminum Alloy Lm6
- * Glass Window: 1 No. 74 mm Diameter Glass Window
- * Terminals: Clip on Type Rail Mounted & Strip Type
- * Earthing: Internal - 01 No. & External - 2 Nos.



FLP / WP Instrument Enclosure with 74 X 74 Glass Window & 3 - 5 Nos Push Buttons

- * Catalogue No.: PFP/IB/08
- * Ex-Protection: AS PER IS / IEC-60079-1:2007
- * Gas Group: I, IIA, IIB
- * IP Protection: IP-65 IS / IEC60529-2001
- * Hardware: Stainless Steel
- * Glass Window: 1 No. 74 X 74 mm Glass Window
- * Contact Element: Electronics PCB with 4-5 Nos. Key / 4-5 Nos. 10A No. Elements
- * Push: 4-5 Nos. Green Push
- * Terminal: 12 Way Clip on Rail or Strip Type



FLP / WP Instrument Enclosure with 96 X 96 Glass Window

- * Catalogue No.: PFP/IB/08
- * Ex-Protection: AS PER IS / IEC-60079-1:2007
- * Gas Group: I, IIA, IIB
- * IP Protection: IP-65 IS / IEC60529-2001
- * Hardware: Stainless Steel
- * Material of Contraction: Die Cast Aluminum Alloy Lm6
- * Glass Window: 1 No. 96 X 96 mm Glass Window
- * Terminal: 12 Way Clip on Rail or Strip Type
- * Earthing: Internal - 01 No. & External - 2 Nos.
- * Cable Entry: 03-05 Nos. for M20 (3/4" ET)

FLP/WP Instruments Enclosure

FLP / WP Instrument Enclosure with 100 X 50 Glass Window & 4 - 5 Nos Push Buttons

- * Catalogue No.: PFP/IB/08
- * Ex-Protection: AS PER IS / IEC-60079-1:2007
- * Gas Group: I, IIA, IIB
- * IP Protection: IP-65 IS / IEC60529-2001
- * Hardware: Stainless Steel
- * Glass Window: 1 No. 100 X 50 mm Glass Window
- * Contact Element: Electronics PCB with 4-5 Nos. Key / 4-5 Nos. 10A No. Elements
- * Push: 4-5 Nos. Green Push
- * Terminal: 12 Way Clip on Rail or Strip Type



FLP / WP Weigh Indicator - 220 mm Dia

- * Catalogue No.: PFP/IB/220
- * Ex-Protection: AS PER IS 2148-2004 / IEC-60079-1:2007
- * Gas Group: I, IIA, IIB
- * IP Protection: IP-65 IS / IEC60529-2001
- * Hardware: Stainless Steel
- * Green Push Button: 4 Nos. PUSH with NO Contact element for 10 AMP
- * Switch: 1 NO 12A DP, ON-OFF Switch 250V A.C. 50Hz
- * Glass Window: 100 X 50 mm with Type "A" Toughened with Mt. Clamp 02 Nos.



FLP / WP Weigh Indicator - 250 mm Dia

- * Catalogue No.: PFP/IB/250
- * Ex-Protection: AS PER IS 2148-2004 / IEC-60079-1:2007
- * Gas Group: I, IIA, IIB
- * IP Protection: IP-65 IS / IEC60529-2001
- * Hardware: Stainless Steel
- * Green Push Button: 5 OR 6 Nos. PUSH with NO Contact element for 10 AMP
- * Switch: 1 NO 12A DP, ON-OFF Switch 250V A.C. 50Hz
- * Glass Window: 100 X 50 mm with Type "A" Toughened with Mt. Clamp 02 Nos.



FLP / WP Instrument Enclosure - 250 mm Dia

- * Catalogue No.: PFP/IB/250
- * Ex-Protection: AS PER IS 2148-2004 / IEC-60079-1:2007
- * Gas Group: I, IIA, IIB
- * IP Protection: IP-65 IS / IEC60529-2001
- * Hardware: Stainless Steel
- * Green Push Button: 7 To 8 Nos. PUSH with NO Contact element for 10 AMP
- * Glass Window: 96 X 96 mm with Type "A" Toughened with Mt. Clamp 02 Nos.
- * Terminal: As Per Client Requirements



FLP/WP Thermocouple Head

FLP / WP Thermocouple Head

- * Catalogue No.: PFP/TH/04
- * Ex-Protection: AS PER IS / IEC-60079-1:2007
- * Gas Group: I, IIA, IIB
- * IP Protection: IP-65 IS / IEC60529-2001
- * Hardware: Stainless Steel
- * Material of Contraction: Die Cast Aluminum Alloy LM6
- * Paint: Epoxy Polyester Powder Coating
- * Earthing: Internal - 01 No. & External - 2 Nos.
- * Cable Entry: 01 OR 02 Nos. M20 (3/4"ET) & 01 No. 1/2" BSP Bottom Side

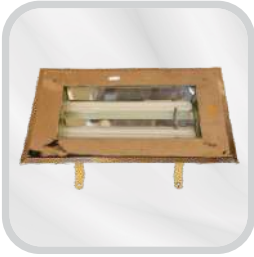


FLP / WP Thermocouple Head

- * Catalogue No.: PFP/TH/04
- * Ex-Protection: AS PER IS / IEC-60079-1:2007
- * Gas Group: I, IIA, IIB
- * IP Protection: IP-65 IS / IEC60529-2001
- * Hardware: Stainless Steel
- * Material of Contraction: Die Cast Aluminum Alloy LM6
- * Paint: Epoxy Polyester Powder Coating
- * Earthing: Internal - 01 No. & External - 2 Nos.
- * Cable Entry: 01 OR 02 Nos. M20 (3/4"ET) & 01 No. 1/2" BSP Bottom Side



FLP/WP Lighting & Switchgear For Clean Room



FLP / WP Bottom Openable Clean Room Fitting

- * Catalogue No.: PFP/BR/14
- * Ex-Protection: AS PER IS / IEC-60079-1:2007
- * Gas Group: I, IIA, IIB
- * IP Protection: IP-65 IS / IEC60529-2001
- * Hardware: Stainless Steel
- * Rating: 2 X 36W CFT Tube
2 X 18W Led PL Tube , 45W Led SMD Type, 60W Led SMD Type
- * Glass: Type "A" Toughened Tubular Glass AS PER IS:2206 / 84 (Part-I)



FLP / WP Clean Room Push Button Station

- * Catalogue No.: PFP/PBS/09
- * Ex-Protection: AS PER IS / IEC-60079-1:2007
- * Gas Group: I, IIA, IIB
- * IP Protection: IP-65 IS / IEC60529-2001
- * Hardware: Stainless Steel
- * Rating:
Green: START with 1 NO Contact element for 10 AMP
Red: STOP Mushroom Head Pad Lock with 1 NC Contact 10AMP
- * Clean Room Purpose: M.S. Box with S.S. 304 Cover Plate



FLP / WP Clean Room Rotary Switch

- * Catalogue No.: PFP/RS/09
- * Ex-Protection: AS PER IS 2148-2004/IEC-60079-1:2007
- * Gas Group: I, IIA, IIB
- * IP Protection: IP-65 IS / IEC60529-2001
- * Hardware: Stainless Steel
- * Material of Contraction: High Pressure Die Cast Aluminum Alloy LM6
- * Switch: Upto 32 A SP / DP / TP
- * Clean Room Purpose: M.S. Box with S.S. 304 Cover Plate
- * Cable Entry: 02 or 03 Nos. for M20 (3/4" ET)



FLP / WP Clean Room Switch Socket with Plug

- * Catalogue No.: PFP/SS/09
- * Ex-Protection: AS PER IS 2148-2004 / IEC-60079-1:2007
- * Gas Group: I, IIA, IIB
- * IP Protection: IP-65 IS / IEC60529-2001
- * Hardware: Stainless Steel
- * Clean Room Purpose: M.S. Box with S.S. 304 Cover Plate
- * Switch: Upto 32 A SP / DP / TP
- * Socket: 3 PIN / 4 PIN / 5 PIN
- * Plug: 3 PIN / 4 PIN / 5 PIN
- * Terminals: Clip on Type Rail Mounted & Strip Type

FLP/WP Cable Gland & Miscellaneous Products



FLP / WP Double Compression Cable Gland

- * Catalogue No.: PFP/CG/1001
- * Gas Group: IIA, IIB
- * IP Protection: IP-66 IS / IEC60529-1:2001
- * Size: From 3/4" E.T To 3" E.T.From 1/2" NPT To 2 1/2" NPT
- * CIMFR Cert No.: CIMFR / TC / H328



FLP / WP Exhaust Fan

- * Catalogue No.: PFP/BR/150
- * Gas Group: IIA, IIB
- * IP Protection: IP-66 IS / IEC60529-1:2001
- * Size: Upto 18"
- * Mounting: Wall Flush

FLP/WP LED Lighting Fitting

LED Flameproof Bulk Head - 30 Watt

- * Catalogue No.: PFP/BL/02
- * IP Protection: IP-66 IS / IEC60529-1:2001
- * LED Lamp: Make LUMILEDS
- * LED Driver: PHILIPS & FULHAM
- * Certification: CMRI Certified including LED Lamp
- * Luminaries Wattage: 30 Watt
- * Input Voltage: 230 V
- * Input Frequency: 50 HZ
- * Input Current: 0.5 A
- * Power Factor: NA



LED Flameproof Bulk Head - 45 Watt

- * Catalogue No.: PFP/BL/02
- * IP Protection: IP-66 IS / IEC60529-1:2001
- * LED Lamp: Make LUMILEDS
- * LED Driver: PHILIPS & FULHAM
- * Certification: CMRI Certified including LED Lamp
- * Luminaries Wattage: 45 Watt
- * Input Voltage: 230 V
- * Input Frequency: 50 HZ
- * Input Current: 0.6 A
- * Power Factor: > 0.90



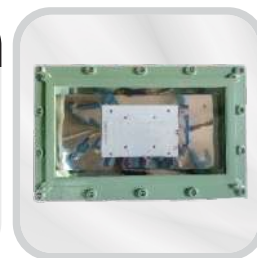
FLP / WP Emergency Tube Light

- * Catalogue No.: PFP/FT/03
- * Gas Group: IIA, IIB
- * Emergency Kit Make: PROLITE AUTOLOGO.LTD
- * Rating: 1x11 W PL Lamp with Ni-Cd Rechargeable Battery
- * Accumulator: SLA
- * Standby Time: 2 Hours



FLP / WP Bottom Openable Clean Room Fitting

- * Catalogue No.: PFP/BR/14
- * Ex-Protection: AS PER IS / IEC-60079-1:2007
- * Gas Group: I, IIA, IIB
- * IP Protection: IP-65 IS / IEC60529-2001
- * Hardware: Stainless Steel
- * Rating: 2 X 36W CFT Tube
2 X 18W Led PL Tube , 45W Led SMD Type, 60W & 80W Led SMD Type
- * Glass: Type "A" Toughened Tubular Glass AS PER IS:2206 / 84 (Part-I)



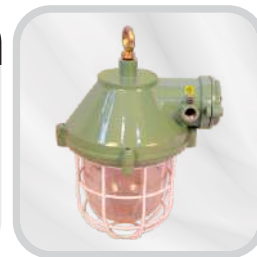
LED Flameproof Well Glass - 30 Watt

- * Catalogue No.: PFP/WG/06
- * IP Protection: IP-66 IS / IEC60529-1:2001
- * LED Lamp: Make LUMILEDS
- * LED Driver: PHILIPS & FULHAM
- * Certification: CMRI Certified including LED Lamp
- * Luminaries Wattage: 31 Watt
- * Input Voltage: 230 V
- * Input Frequency: 50 HZ
- * Input Current: 0.6 A
- * Power Factor: > 0.90



LED Flameproof Well Glass - 45 Watt

- * Catalogue No.: PFP/WG/06
- * IP Protection: IP-66 IS / IEC60529-1:2001
- * LED Lamp: Make LUMILEDS
- * LED Driver: PHILIPS & FULHAM
- * Certification: CMRI Certified including LED Lamp
- * Luminaries Wattage: 45 Watt
- * Input Voltage: 230 V
- * Input Frequency: 50 HZ
- * Input Current: 0.6 A
- * Power Factor: > 0.90



LED Flameproof Well Glass - 60 Watt

- * Catalogue No.: PFP/WG/06
- * IP Protection: IP-66 IS / IEC60529-1:2001
- * LED Lamp: Make LUMILEDS
- * LED Driver: PHILIPS & FULHAM
- * Certification: CMRI Certified including LED Lamp
- * Luminaries Wattage: 60 Watt
- * Input Voltage: 230 V
- * Input Frequency: 50 HZ
- * Input Current: 0.6 A
- * Power Factor: > 0.90



FLP/WP LED Lighting Fitting



LED Retrofit Kit - 30 Watt

- * Catalogue No.:
- * IP Protection: IP-66 IS / IEC60529-1:2001
- * LED Lamp: Make LUMILEDS
- * LED Driver: PHILIPS & FULHAM
- * Certification: CMRI Certified including LED Lamp
- * Luminaries Wattage: 30 Watt
- * Input Voltage: 230 V
- * Input Frequency: 50 HZ
- * Input Current: 0.6 A
- * Power Factor: > 0.90



LED Retrofit Kit - 45 Watt

- * Catalogue No.:
- * IP Protection: IP-66 IS / IEC60529-1:2001
- * LED Lamp: Make LUMILEDS
- * LED Driver: PHILIPS & FULHAM
- * Certification: CMRI Certified including LED Lamp
- * Luminaries Wattage: 45 Watt
- * Input Voltage: 230 V
- * Input Frequency: 50 HZ
- * Input Current: 0.6 A
- * Power Factor: > 0.90



LED Flameproof Reaction Vessel Lamp - 15 Watt

- * Catalogue No.: PFP/RV/01
- * IP Protection: IP-66 IS / IEC60529-1:2001
- * LED Lamp: Make LUMILEDS
- * LED Driver: PHILIPS & FULHAM
- * Certification: CMRI Certified including LED Lamp
- * Luminaries Wattage: 15 Watt
- * Input Voltage: 230 V
- * Input Frequency: 50 HZ
- * Input Current: 0.3 A
- * Power Factor: NA



LED Flameproof Well Glass Sunflower Type - 45 Watt

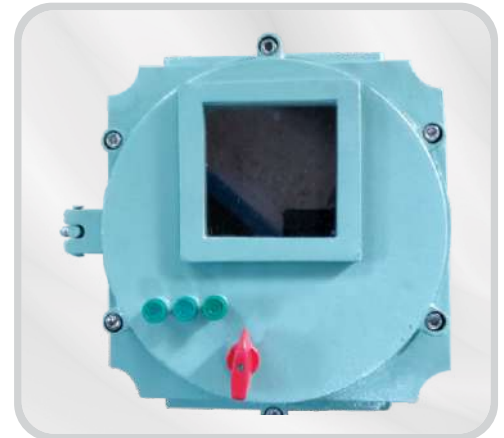
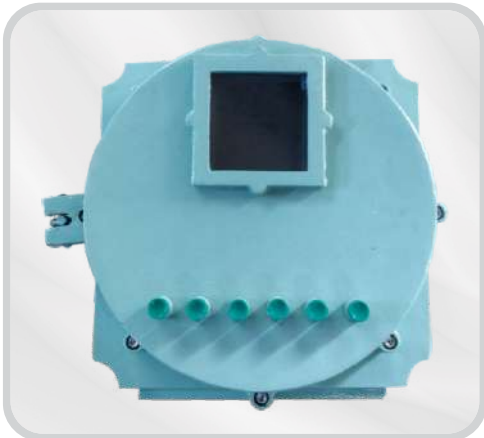
- * Catalogue No.: PFP/WG/06
- * IP Protection: IP-66 IS / IEC60529-1:2001
- * LED Lamp: Make LUMILEDS
- * LED Driver: PHILIPS & FULHAM
- * Certification: CMRI Certified including LED Lamp
- * Luminaries Wattage: 45 Watt
- * Input Voltage: 230 V
- * Input Frequency: 50 HZ
- * Input Current: 0.6 A
- * Power Factor: > 0.90



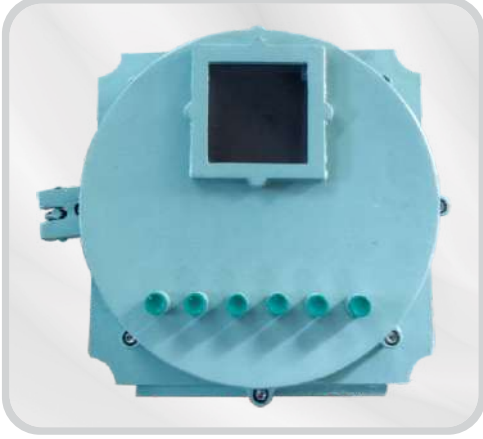
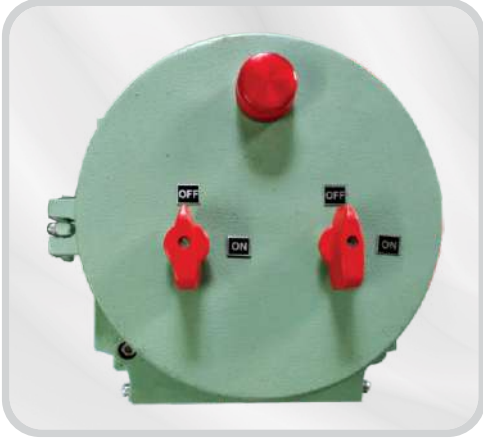
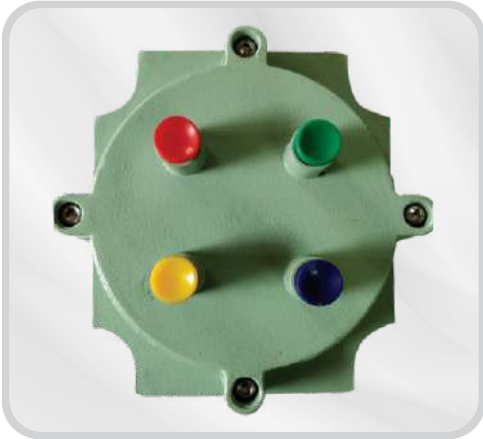
LED Flameproof Well Glass Sunflower Type - 60 Watt

- * Catalogue No.: PFP/WG/06
- * IP Protection: IP-66 IS / IEC60529-1:2001
- * LED Lamp: Make LUMILEDS
- * LED Driver: PHILIPS & FULHAM
- * Certification: CMRI Certified including LED Lamp
- * Luminaries Wattage: 60 Watt
- * Input Voltage: 230 V
- * Input Frequency: 50 HZ
- * Input Current: 0.6 A
- * Power Factor: > 0.90

FLP/WP Customized Instruments Enclosure



FLP/WP Customized Panel Enclosure



FLP/WP Customized Panel Enclosure



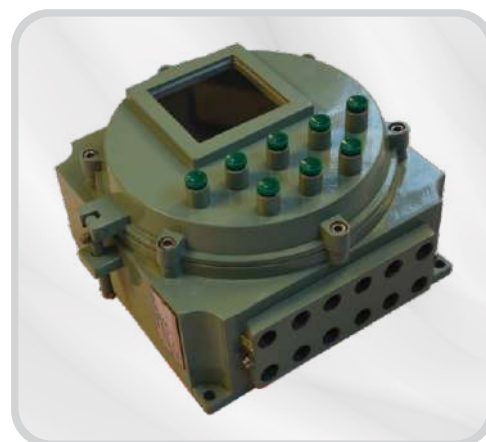
FLP/WP Customized Enclosure & Junction Box for Weigh Indicator



220 x 220 x 120 mm
Instrument Enclosure



220 x 220 x 120 mm
Instrument Enclosure



250 x 250 x 140 mm
Instrument Enclosure



350 x 350 x 140 / 180 mm
Instrument Enclosure



150 x 150 x 120 mm
Junction Box



350 x 350 x 140 / 180 mm
Junction Box



Arrow of Safety

www.patcoflameproof.com

www.patcoflameproof.in

PATCO FLAME PROOF PRODUCTS

7, Vakharia Industrial Estate, Ram Mandir Road, Goregaon (W), Mumbai - 400104, INDIA.

Tel : +91 22 6697 8038 Mob : +91 98677 94694 / 98677 94693

Email : patco.flp@gmail.com / info@patcoflameproof.in

Specifications and other descriptions in this brochure are subject to change without notice.
2019 Patco Flameproof Products., All Rights Reserved.